



EGCG ((-)-Epigallocatechin gallate)

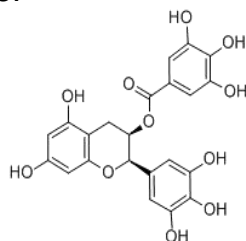
Botanical source: Green tea leaf

*CAS No.:*989-51-5

Product Name: (-)-Epigallocatechin gallate

*Molecular formula:*C₂₂H₁₈O₁₁ *MW:*458.3

Molecular Structure:



*Synonym:*Tea catechin, EGCG

Technical Data

No.	Test Items	Standard
1	Visual/soluble/stable	Off-white powder with character odour and taste, soluble in water and ethanol. Stable in PH4-6.
2	Moisture	Max.5%
3	Ash	Max. 2%
4	Assay(HPLC)	EGCG:80%,90%,95% Caffeine: max. 1%
5	M.P	222-224°C
6	Heavy Metals(lead ppm)	Max 10ppm
7	Total Bacteria	NMT1000cfu/g
8	Yeast & Mold	NMT100cfu/g
9	Coliform Bacteria Group	Negative
10	Salmonelia	Negative

Application: widely used in pharmaceuticals and healthcare, etc.

Packing & Storage: keep cool and dry; drum after sealed by aluminium-foil bag, net weight:
25kgs/drum

Shelf Life: Two years

Contact information: Company: WJF Chemicals Co. Ltd. QuZhou (website: <http://www.wjfchemicals.com>)

Address: 601 ZhongXing Plaza No. 123 HeHua ZhongLu QuZhou ZheJiang Province China
Email: info@wjfchemicals.com Tel./Fax: +865703865831 Mob.:+8613059765326